



# GALVESTON WHARVES

THE PORT OF EVERYTHING

# BAYTRAN TRANSPORTATION COMMITTEE MEETING

Galveston Wharves Board | August 15, 2025

By Rodger Rees, Port Director & CEO



# BICENTENNIAL UPDATE

- Planning proceeding for events:
  - Oct. 16 – Sponsor golf tournament
  - Oct. 17 – Party on the Pier
  - Oct. 18 – Gala – Table and ticket sales begin in July
- Net proceeds benefit Texas A&M Galveston maritime scholarships
- Book on track for publication in October
- Current expense estimate - \$678,000
- Current revenue estimate - \$945,000\*

*\*Including sponsorships, gala ticket sales, and book sales.*

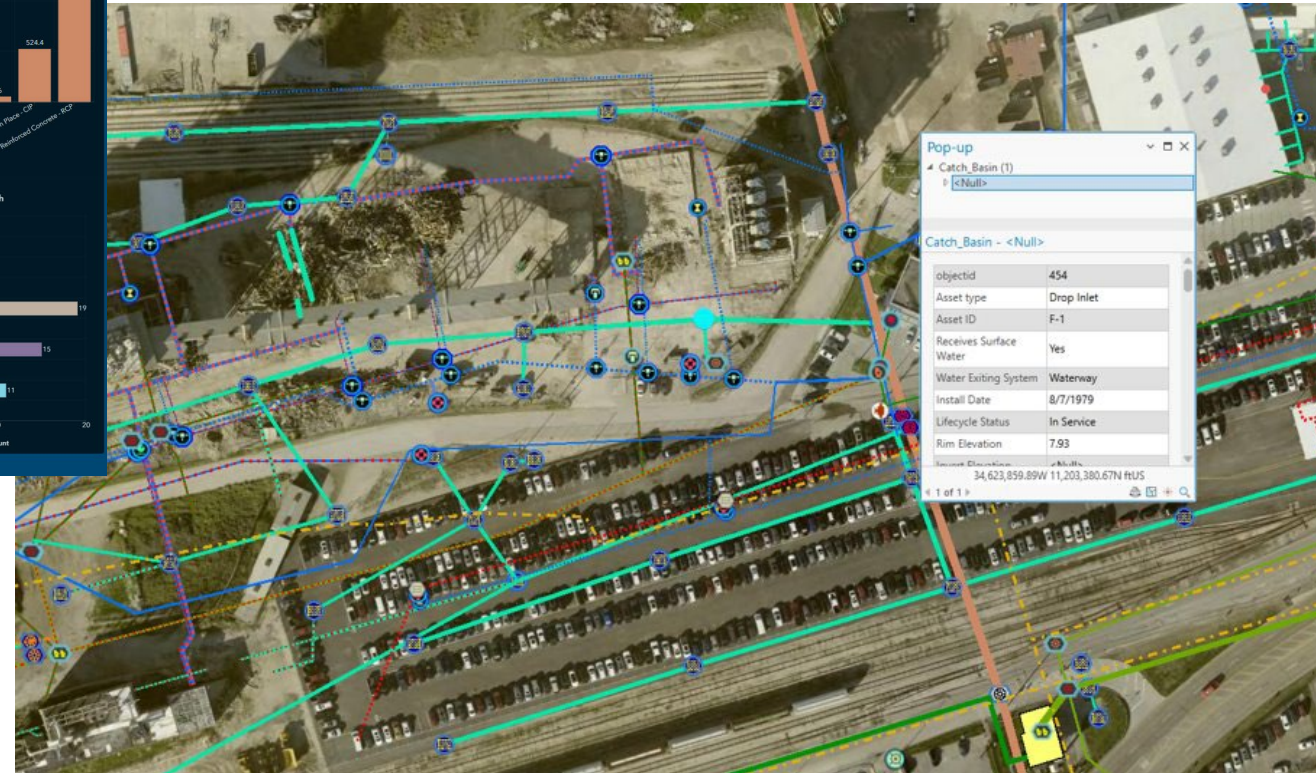


Visit [www.portofgalveston200.com](http://www.portofgalveston200.com)  
for sponsor and event details.

# GIS SYSTEM



Our Stormwater Management Dashboard, one of six currently operating.



A screenshot of the area surrounding our police station from our Utility Map



# PROJECTS

## (MP19) CT25 Walkway Improvements

### Work Progress

- The ongoing value engineering process has identified potential cost savings through a series of scope reductions, material substitutions, and system simplifications
- Port to provide architect direction on how to update the plans and rebid the project



**Excerpt from Pre-Bid Meeting Slides**

# PROJECTS

## (MP6) Wharf Road 23<sup>rd</sup> to 20<sup>th</sup> Street (Rider 37)

- CenterPoint overhead utility relocation awarded, easement review is pending
- Contract with Texas Gulf executed and pre-construction meeting held on July 18

### Financial Update

- \$2,983,338 construction contract amount



Updated Roadway Schematic

# PROJECTS

## (WP12A) ADM Grain Tower Demolition

- August 2025 completion
- Financial Update
- \$3,303,820 construction contract amount



Showing Second Crusher Onsite

# PROJECTS

## (WP1A/WP1B) Pier 38-39 Slip Fill (FEMA)

### Work Progress

- Batter pile and king pile installation is 100% complete
- 2 of 5 concrete fender blocks have been poured
- Slip fill to begin August

### Financial Update

- \$3,575,670.00 (85%) Engineering contract
- \$29,396,385 (40%) Construction contract



**Concrete Placement for Fender Block**

# PROJECTS

## (WP2A/WP8) Pier 39-41 Bulkhead (TXDOT)

### Work Progress

- King pile installation in front of Pier 39-40 T-Head is 50% complete
  - One king pile rejected, working on resolution
- Tieback system wall installation is 90% complete as of end of June
- Pier 41 return wall demolition has started
- Slip fill for the 50' wharf to begin in September

### Financial Update

- \$36,553,507 (53%) construction contract spent to date



**Pier 41 Return Wall Demolition**

# PROJECTS

## (WP4A) Old Port Industrial Rd 33rd-41st (SCP88)

### Work Progress

- 100% drawing package received
- Working With CenterPoint to plan power pole relocations
- Project delayed with an estimated bid date, mid 2026

### Financial Update

- \$641,792 basic engineering services spent to date
- \$239,862 as-needed engineering services spent to date



Plan of proposed Improvements

# PROJECTS

## (EP8/9) Cruise Terminal 16 (Terminal/Civil)

- Project Update
  - Construction administration, revision and reviews ongoing for the project

### Financial Update

- Approximately \$103 Million contract
- Parking Garage \$56 Million
- First cruise ship November 9, 2025



# PROJECTS

## (EP8/9) Cruise Terminal 16

### Construction Manager at Risk (CMAR)

#### Work Progress

- Interior Buildout MEP, drywall ceiling framing ongoing
- Exterior and interior painting ongoing
- Conditioned Air Live in the whole Terminal
- Low voltage pulling of cables, data and fire alarm ongoing, coordinating CenterPoint through energizing process
- Hard scaping, stabilization and striping on surface lot ongoing(Lots #5,#4,#2 @100% completion)
- Vertical core and concourse framing, fireproofing and storefront stem wall in progress, Concrete for ramp completed
- Concrete precast for pedestrian bridge at 100%, topping slab placement completed, elevator, Electrical fixtures and finishes for garage ongoing
- Total hours to date (June) – 303,080

#### Financial Update

- \$100,709,260.00 (77%) of \$130,969,918 spent to date
- GMP#4 to be presented at July Meeting for Addition SOW at cost of \$2.7M to be paid for out of existing bond proceeds



# PROJECTS

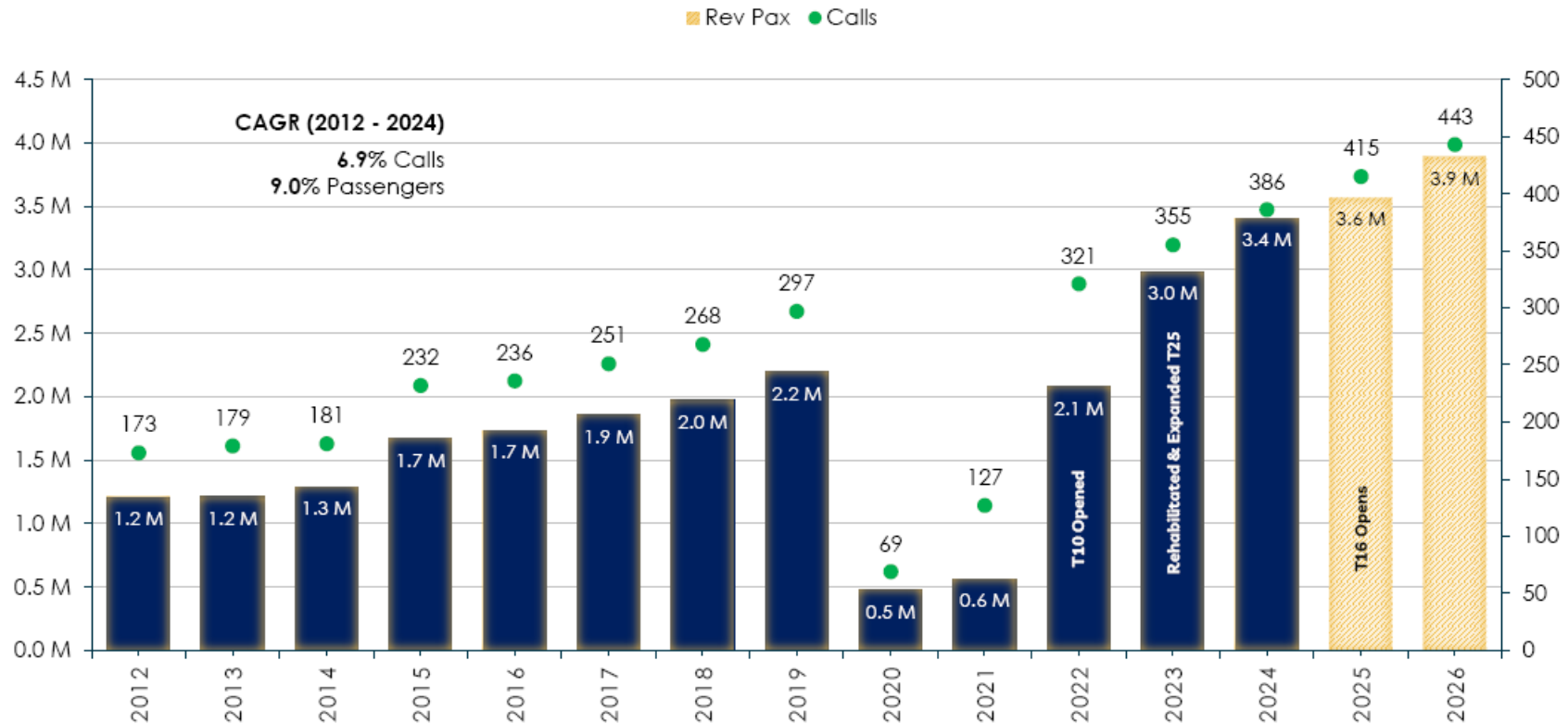
## (EP8/9) Cruise Terminal 16 (Passenger Boarding Bridge)

- Procurement, manufacturing, sandblasting and painting of materials ongoing
- \$47% of \$7,790,000 of contract spent to date
- 100% factory visit, inspection and testing scheduled for Sept. 2-5



# MASTER PLAN

## GALVESTON PASSENGERS & CALLS



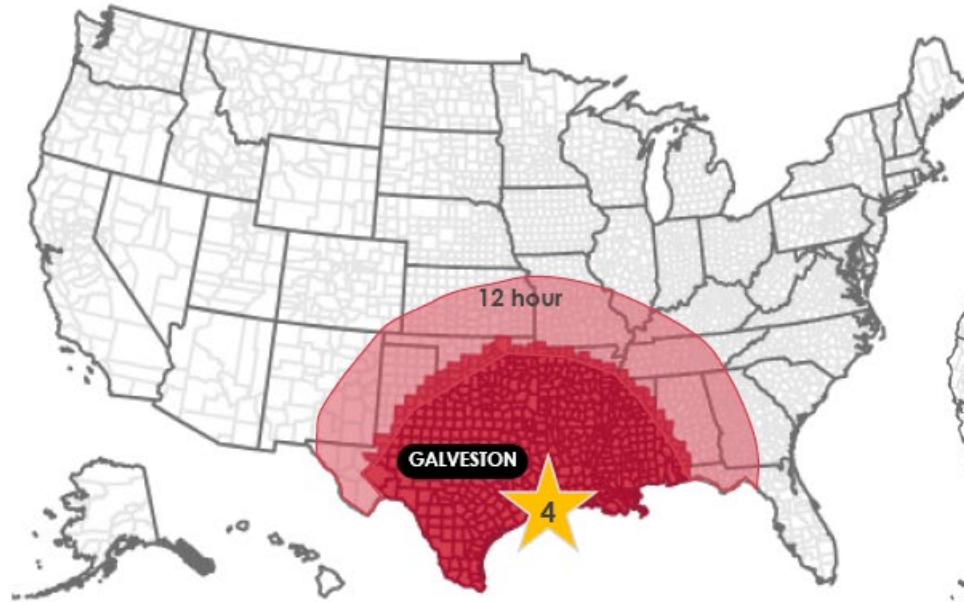
2025 & 2026 are estimates based on schedules



# Passenger Density

— OPPORTUNITY - DRIVE GUEST MARKET

## Success Breeds New Opportunities



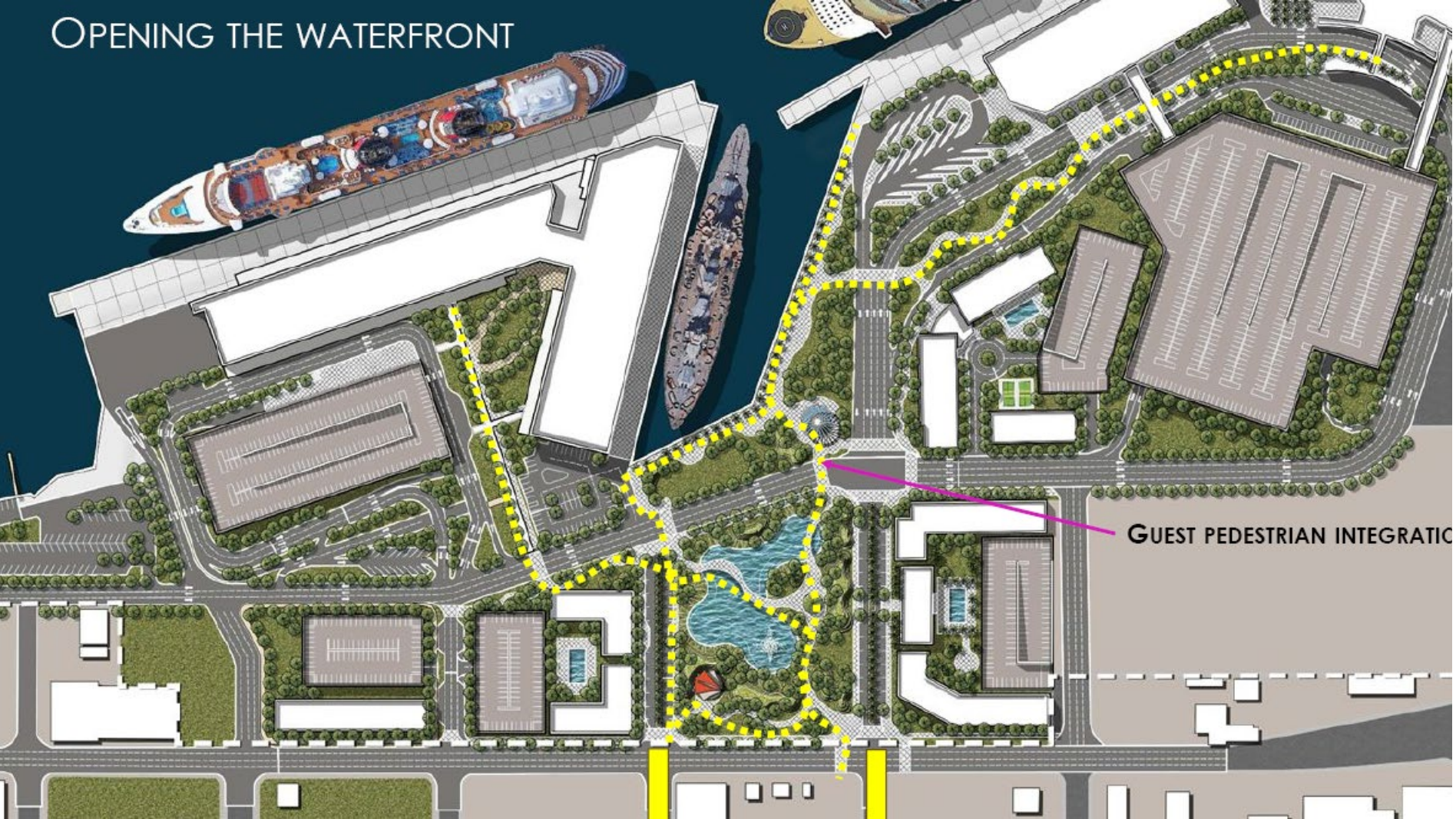
Drive Market (500 Miles / 8 Hours)

Port	Population	10 Yr Growth
Miami	26 M	16.5%
Canaveral	46 M	14.5%
Everglades	27 M	16.4%
<b>Galveston</b>	<b>46 M</b>	<b>11.1%</b>
Tampa	47 M	13.6%
<b>New Orleans</b>	<b>63 M</b>	<b>11.8%</b>

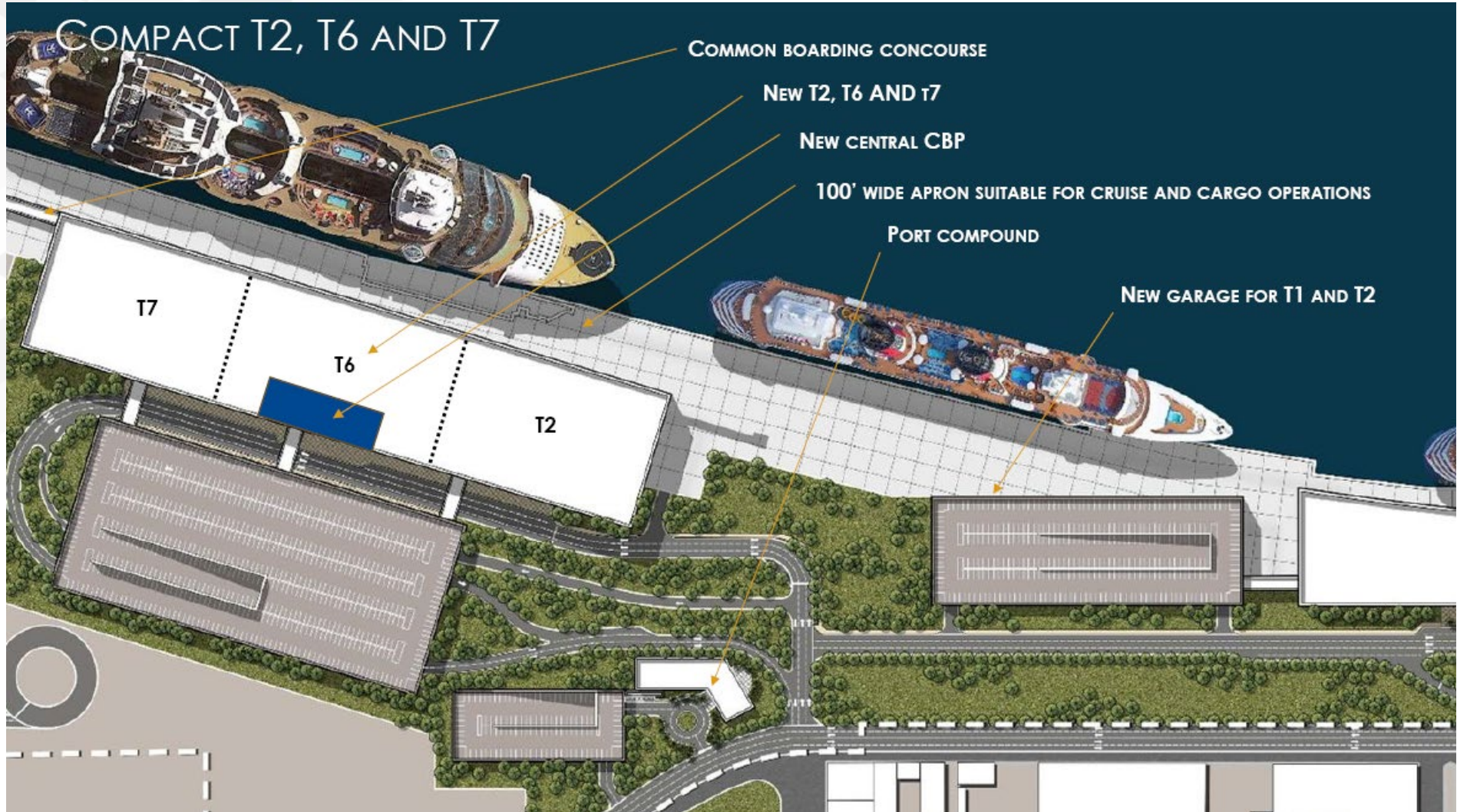
# MASTER PLAN



# USS TEXAS NEW HOME



# POTENTIAL CRUISE TERMINALS



# FLEX DOCK CONCEPT

